

## OUR FORMULA

# Chocolate covered Oreos:

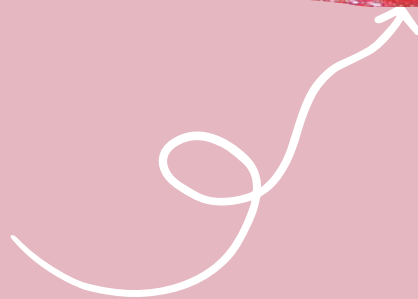
### OREO BISCUIT

WHEAT flour, sugar, palm oil, fat reduced cocoa powder, WHEAT starch, glucose-fructose syrup, raising agents, salt, emulsifiers (SOYA lecithin, sunflower lecithin)



### WHITE CHOCOLATE

Sugar, Cocoa butter, whole MILK powder, emulsifier: SOYA lecithin (E322), flavouring: natural vanilla



Made in an environment that handles nuts, eggs, milk and mustard  
Consume within 2-3 days of opening  
Shelflife: 12 weeks



### SUGAR PASTE

sugar, glucose syrup, palm oil, humectant: E422 preservative, colouring



Please see allergens in CAPITALS)