

BURFORD HAMPER WITH PROSECCO CONTENTS INGREDIENTS

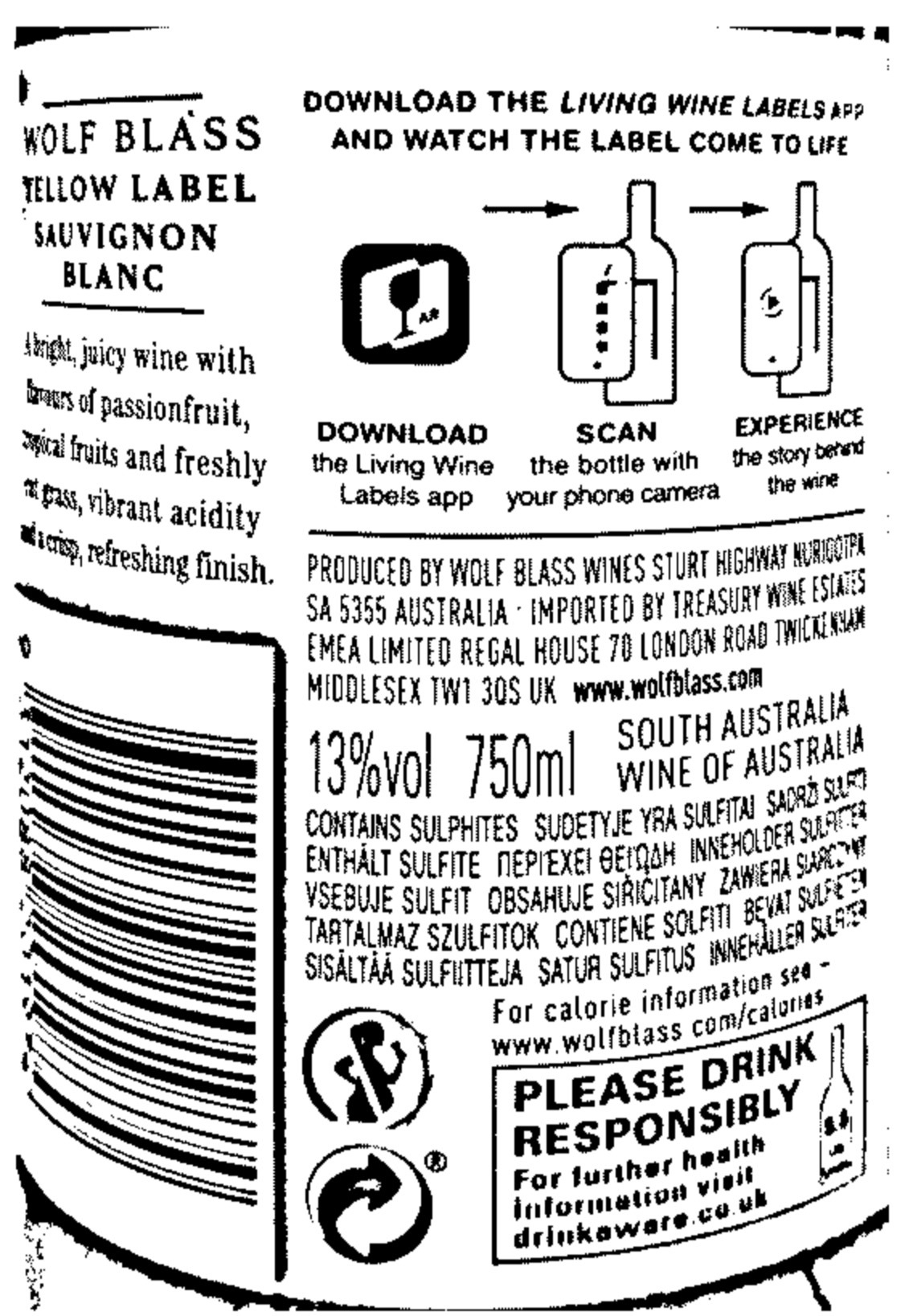
Mionetto, Yellow Label Prosecco, 75cl



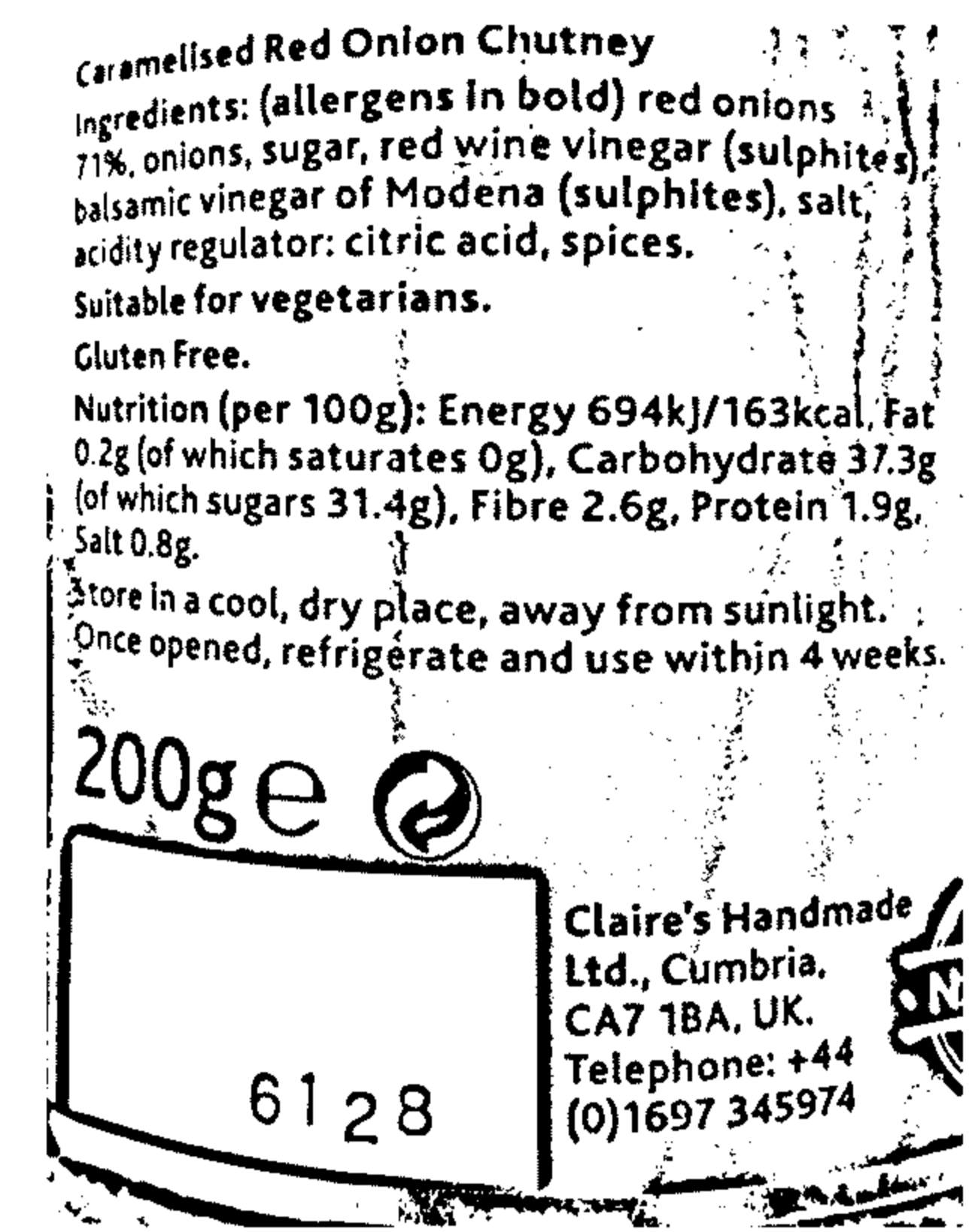
Wolf Blass, Yellow Label, Shiraz, 75cl



Wolf Blass, Yellow Label, Sauvignon Blanc, 75cl



Claire's Handmade, Red Onion Marmalade, 200g



Stag, Smoked Dunlop Cheese Straws, 100g

NUTRIENTS	per100g
Energy/Valeur énergétique/Nährwert/Energia (kcal):	514
Energy (kJ):	2140
Fat/Lipides/Fett/Grasas(g):	35.5
of which Saturates/Dont acides gras saturés/davon gesättigte Fettsäuren/De las que son saturadas (g):	23.8
Carbohydrate/Glucides/Kohlenhydrate/Hidratos de carbono (g):	35.5
of which Sugars/Dont sucres/davon Zucker/De los que son azúcares (g):	0.7
Protein/Protéines/Eiweiß/Proteínas (g):	12.6
Salt/Sodium/Natrium/Sodio (g):	1.2

Yorkshire Crisps, Natural Sea Salt, 100g

Natural Sea Salt

Typical Nutritional Values

Per 100g	
Energy	2043kJ 488kcal
Fat	23.8g
of which saturates	5.4g
Carbohydrate	61.9g
of which sugars	0.3g
Protein	8.5g
Salt	1g

Ingredients Potatoes, Sunflower Oil, Sea Salt

100 grams =

For allergens see ingredients in **bold**.

Suitable for vegetarians and gluten free

5 060092770040

STORE IN A COOL DRY PLACE

Border Biscuits, Dark Chocolate Ginger Biscuits, 150g

Ingredients: Plain Chocolate (40%) (Sugar, Cocoa Mass, Cocoa Butter, Milk Fat, Emulsifier, Soya Lecithin, Vanilla Flavouring), Wheat Flour (Cakium, Iron, Niacin, Thiamin), Sugar, Vegetable Oil (Palm, Rapeseed), Golden Syrup, Butter, Ground Ginger (1.5%), Raising Agents (Ammonium Bicarbonate, Sodium Bicarbonate).

PLEASE DRINK RESPONSIBLY

Nutritional Information	Per 100g	Per biscuit
Energy	463 kcal 1939 kJ	81 kcal 338 kJ
Fat	23.0g	4.0g
of which saturates	11.3g	2.0g
Carbohydrate	57.6g	10.1g
of which sugars	39.0g	6.8g
Protein	7.7g	0.8g
Salt	0.7g	0.1g

PLEASE RECYCLE THE CARD

150g e

Suitable for Vegetarians

The Cotswold Gourmet, 5" Cherry & Almond Loaf Cake with Marzipan Star & Dusting

PLEASE DRINK RESPONSIBLY

150g e

Suitable for Vegetarians

ALLERGEN INFORMATION: For allergens, including cereals containing gluten, see ingredients in **bold**. May also contain soya. **CAUTION!** Although every effort has been made to remove the cherry stones, some of them may remain.

Nutritional Information per 100g: Energy 1330kJ/318kcal, Fat 8.6g (of which saturates 1.3g), Carbohydrate 61.6g (of which sugars 30.3g), Fibre 1.0g, Protein 4.3g, Salt 0.3g.

Suitable for Vegetarians. Store in a cool, dry place away from sunlight. Once opened store in an airtight container.

The Cotswold Gourmet, Steamed Lemon Pudding, 350g

280g Steamed Lemon Pudding

INGREDIENTS: Fortified wheat flour (WHEAT, calcium carbonate, iron, niacin, thiamine), sugar, liquid whole EGG, rapeseed oil, water, lemon curd (9%) (sugar, water, glucose syrup, concentrated lemon juice, margarine (fat blend (palm, palm stearine, coconut oil, rapeseed oil), water, lemon juice), EGG powder, WHEAT starch, modified WHEAT starch, gelling agent (pectin), sicilian lemon oil, acidity regulators (citric acid, trisodium citrate), colours (mtein, curcumin)), humectant (vegetable glycerine), maize starch, WHEY powder (MILK), lemon flavouring (<1%), preservative (potassium sorbate), raising agents (diphosphates, sodium bicarbonates), WHEAT gluten, salt, emulsifiers (propylene glycol esters of fatty acids, mono- and diglycerides of fatty acids, polyglycerol esters of fatty acids).

ALLERGEN INFORMATION: For allergens, including cereals containing gluten, see ingredients in **CAPITAL**. May also contain **SOYA** and **NUTS**.

NUTRITIONAL INFORMATION PER 100g: ENERGY 1723kJ / 412kcal, FAT 7.9g, SATURATES 1.6g, CARBOHYDRATE 54.4g, SUGARS 42.8g, PROTEIN 4.1g, SALT 0.42g.

PREPARATION GUIDELINES: Remove foil and label. Loosen lid. TO MICROWAVE: Cook on full power for 90 seconds (time based on a 800W output. If different refer to manufacturer's handbook). TO STEAM: Place in a steamer or boil in a saucepan filled to half depth of the pudding with water. Cook for 20 minutes. Do not boil dry. SERVING: Once cooked invert basin onto a plate and allow to stand for 30 seconds. CAUTION: Pudding may be hot. Store in a cool, dry place.

BATCH: 31520

Lindt, Swiss Luxury Chocolate Selection, 145g

LINDT & SPRÜNGLI MAÎTRE CHOCOLATIER SUISSE DEPUIS 1845

Assorted Swiss chocolates

Ingredients: sugar, cocoa mass, cocoa butter, whole milk powder, almonds, vegetable fat (palm, coconut, palm kernel, shea), anhydrous milk fat, skim milk powder, lactose, sweetened condensed milk, hazelnuts, glucose syrup, butter, cream, humectant (sorbitol syrup), emulsifier (soya lecithin), wheat flour, cocoa kernels, rice flour, orange peel, coffee, barley malt extract, flavourings, orange juice concentrate, fat reduced cocoa powder, egg white, wheat gluten, dextrose, purified rice, colours (curcumin, annatto, paprika extract), wheat malt, salt, stabilizer (sodium phosphate), milk proteins, acid (citric acid), wheat starch raising agent (sodium bicarbonate), barley malt, glazing agent (Shellac), gelling agent (guar gum).

May contain other nuts. Milk chocolate contains: Cocoa solids: 31% min. Milk solids: 18% min. Dark chocolate contains: Cocoa solids: 41% min.

NUTRITION INFORMATION PER 100g	
Energy / Energie / Energia / Wartość energetyczna / Energetická hodnota / Energia	2394kJ / 575kcal
Fat / Fett / Rasvaa / Tuszcz / Tuluy	37g
- of which saturates / varav máttat fett / josta tydytymytta rasvaa / w tym kwaszy tłuszczowe nasycone / z toho nasýcené / nasytené mastné kyseliny	21g
Carbohydrate / Kohlydrater / Hiidhydraattia / Weglowodany / Sachandy	52g
- of which sugars / varav sokkerater / josta sokkeraita / w tym cukry / z toho cukry	48g
Protein / Protein / Proteina / Białko / Białkoviny / bielkoviny	6,5g
Salt / Salt / Suolaa / Sól / Sól / Sol	0,15g

Distributed by: Lindt & Sprüngli (UK) Ltd, 4 New Square, Feltham, Middlesex, TW14 8HA - Distribútor: Josta sokkeraita / Lindt & Sprüngli (Nordic) AB, Telegatan 6A, SE-169 72 Solna - Wyprodukowano w

Lindt, Lindor Assorted Swiss Chocolate Truffles, 200g

LINDT & SPRÜNGLI MAÎTRE CHOCOLATIER SUISSE DEPUIS 1845

Milk, extra dark, milk with hazelnut pieces and white chocolate truffles with a smooth melting filling

Ingredients: sugar, vegetable fat (coconut, palm kernel), cocoa butter, cocoa mass, whole milk powder, lactose, skimmed milk powder, anhydrous milk fat, hazelnuts, emulsifier (soya lecithin), barley malt extract, flavourings, vanilla beans.

May contain other nuts.

Milk chocolate contains - cocoa solids: 31% min. - milk solids: 20% min.

Extra dark chocolate contains - cocoa solids: 60% min.

Cotswold Gourmet, Milk Chocolate Pudding Bar, 100g

MILK & WHITE CHOCOLATE WITH FRUITS

Ingredients: Sugar, Cocoa Butter, Whole Milk Powder, Cocoa Mass, Golden Syrup, Raisins, Non Hydrogenated Sunflower Oil, SILPHUR DIOXIDE, Raisins (Cottonseed Oil), Cranberries (Cane Sugar, Sunflower Oil), Emulsifier, SOYA Lecithin (E322), Natural Vanilla Flavouring.

Milk Chocolate Contains: Minimum 29.5% Cocoa Solids, 22% Milk Solids

White Chocolate Contains: Minimum 28% Cocoa Solids, 26% Milk Solids

Allergen Information: For allergens including cereals containing gluten see ingredients in **BOLD CAPITALS**.

Made with equipment that may also process: Tree Nuts, Eggs, Sesame, Wheat & Gluten

100g e

Nutritional Information per 100g: Energy 2289kJ / 546kcal, Fat 18.5g, of which Saturates 7.5g, Carbohydrates 58.8g, of which Sugars 51.2g, Protein 8.6g, Salt 0.18g.

PLEASE DRINK RESPONSIBLY

100g e

Suitable for vegetarians

BEST BEFORE: SEE BAG